

I·C·A·C

INDEPENDENT COMMISSION
AGAINST CORRUPTION

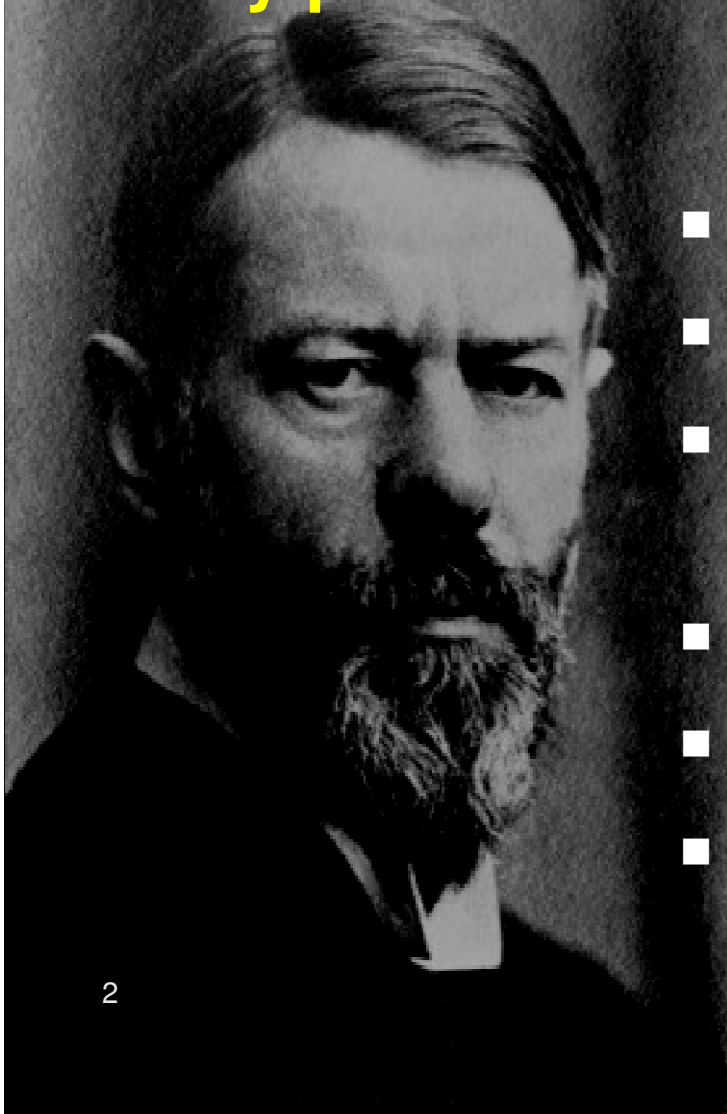


Control and Corruption

APSACC
2011

Dr Robert Waldersee
Executive Director
Corruption prevention
ICAC

Weberian bureaucracy is the administrative equivalent of the assembly line – standard and reliably produced outcomes



- Fixed jurisdiction ordered by rules
- Hierarchy provides supervision
- Management based on written documents
- Expertly trained staff
- Office work is full time
- The office uses rules to control behaviour.



From the 1980's bureaucracy has been increasingly under pressure to:

I·C·A·C

INDEPENDENT COMMISSION
AGAINST CORRUPTION

ERROR: stackunderflow
OFFENDING COMMAND: ~

STACK: